

2 MASTERPLAN CONCEPT PLAN

The landscape masterplan illustrates and incorporates key design initiatives informed by site analysis, issues and opportunities and community and stakeholder workshops.



2 LANDSCAPE MASTERPLAN

Design initiatives

- Lowalde Recreation Reserve is a community-based reserve.
- The car park is reconfigured and shifted north to create space for the pedestrain entry. The proposed main pathway is aligned with the existing childrens’crossing.
- Creation of a strong,visible and inviting main entrance.
- Improved path network to include a shared pathway linking to the Yan Yean Pipetrack (potential future shared path network) and a walking loop within the reserve. This includes seating and bicycle station/pump node. The track connects to the exercise and multi-use softfall area.
- The oval is an informal overflow sports field with no formal outline markings.
- Potential toilet location near the kindergarten / main path to ensure passive surveliance and easy access
- Upgraded playground with nature-play and sensory elements that is suited to all abilities and range of ages.
- Large shelter with picnic settings & BBQ located centrally for parents, children and the general community to enjoy.
- Outdoor classroom located near kindergarten and on the way to school to provide additional learning space and connection with nature
- Open grass areas with shade trees areas for rest and interaction.
- Fitness zone and half court with rebound wall for exercise, sports practice and play.
- Natural shade provision and biodiversity improvements by increasing native tree and shrub planting coverage.
- CCTV and lighting within the car park to create a sense of safety and to deter illegal activity.
- Solar lighting along the shared path to increase safety and create and inviting space.
- Gentle viewing mounds with tree copses for shade to the perimeter of the oval .

Strengths

ACCESS AND CIRCULATION

- Reconfiguration of the car park will integrate WSUD treatments and planting as well as trees for shade.
- Proposed car park orientation and location will separate pedestrian and vehicular movement.
- High-quality path network will include main entry path, walking and exercise circuit/ loop and shared path along the western boundary.
- Open lawn area will allow for multi-use sports and activities. There is no formal oval.
- Seats with backrest and armrests will be located along the walking route to allow for rest.

GENDER-NEUTRAL AND ALL ABILITIES ACCESSIBLE SPACES

- Outdoor gym will offer exercise options for all ages and abilities.
- Upgrade to path quality and network will improve accessibility.
- Proposed toilets to accommodate access for all.
- The playground will offer sensory play elements designed for children with special needs.
- Play equipment and surfacing will create play opportunities for all abilities.

SAFE AND INCLUSIVE SPACES FOR WOMEN AND CHILDREN

- Key sitting, play and exercise areas will have good passive surveillance.
- Platform seating near half court will create alternative space to ‘hang out’.
- CCTV and solar lighting integrated throughout the site will improve safety.
- Planting adjacent to carpark and pathways to maintain view lines for passive surveillance and safety.
- Proposed toilets located to ensure passive surveillance.

BUILDINGS, FACILITIES AND AMENITIES

- Various sitting nodes throughout the park will create opportunities for gatherings,learning, creativity and play.
- Bench seats along the paths will offer quiet space for reflection and respite.
- Centrally located shelter with picnic settings will cater for larger groups
- New playspace, active zone, upgraded/new drinking fountains with dog bowls, bins, bicycle racks, variety of seating options will attract community use throughout the year.

TOPOGRAPHY AND VIEWS

- Gentle turf mounding with tree planting along the perimeter of the oval will offer viewing options and provide visual interest.
- Clear trunk trees in locations where passive surveillance is important.

VEGETATION

- All mature trees will be retained and protected unless otherwise advised by the arborist.
- The biodiversity of the reserve will be enhanced through new tree and shrub planting.
- Avenue type trees planted along the main paths will create pleasant walking environment.
- Trees planted throughout the playspace will provide summer shade.

Masterplan Concept Plan

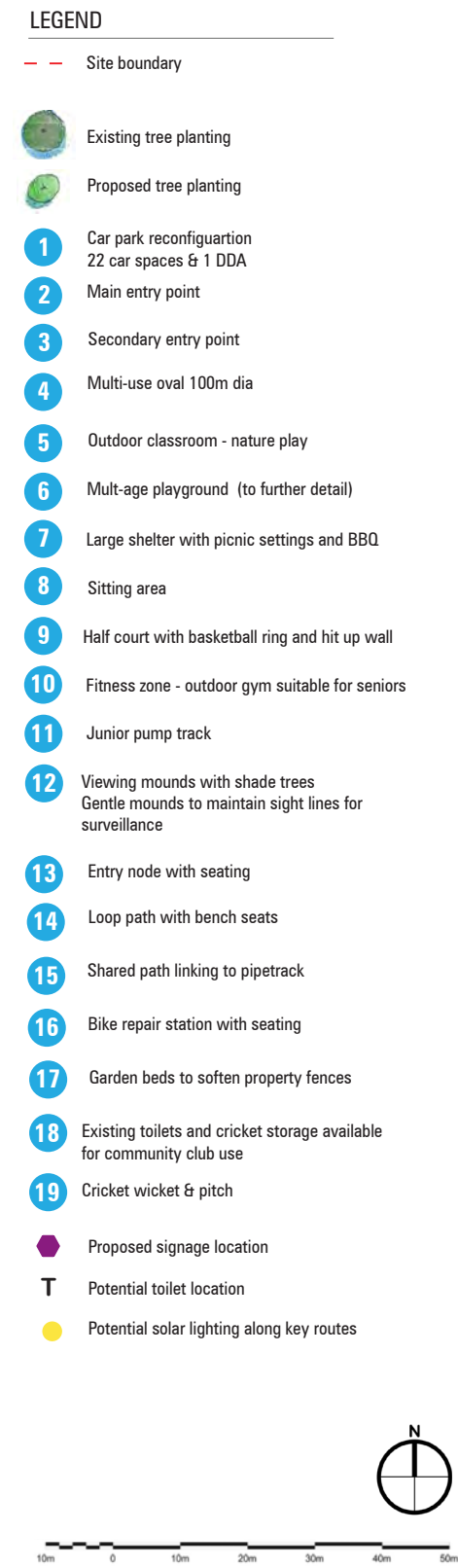


Figure 1 Masterplan Concept Plan

COMMUNITY-BASED RESERVE

RUN
WALK
BIKE



PIPETRACK

SOLAR LIGHTING
SUSTAINABILITY



RESERVE
SHARED PATH
LEARN
PLAY
MOUNDING

Precedent Imagery

RECREATION



NATURE PLAY



MULTI-AGE PLAY EQUIPMENT



NATURE PLAY



TURF MOUNDS



WALKING PATHS



PUMP TRACK



HIT-UP WALL



HALF COURT



OUTDOOR GYM



OUTDOOR CLASSROOM

BUILDINGS, FACILITIES & AMENITIES



SITTING



SHELTER & SEATING



SHELTER & SEATING



BBQ AREA



WATER FOUNTAIN & DOG BOWL



SEATING



SEATING



SITTING



BENCH SEATS



BIKE PUMPING STATION

Precedent Imagery

GENDER-NEUTRAL, ALL-ABILITIES & SAFE SPACES



SENSORY PATH



SENSORY WALL



SENSORY WALL



ALL ACCESS PLAY



CCTV



BENCH SEATS WITH ARMRESTS



LARGE BASKET SWING



SOLAR POLE LIGHTING



HANG-OUT SPOTS



GLOW IN THE DARK PATH

VEGETATION



BASALT PLAINS GRASSLAND



RIVER RED GUM GRASSY WOODLAND



SWAMP SCRUB



RIPARIAN FOREST



BOX-STRINGYBARK WOODLAND



MOUNDING



OPEN GRASS AREAS



MOUNDING



BIRD BOXES



TREE COPSE

Precedent Imagery

ACCESS & CIRCULATION



PATH LINKAGES



SHARED PATHWAY



SHADED PATHWAYS



CAR PARK WSUD



CAR PARK PERMEABLE PAVING



BIKE RIDE TO SCHOOL & KINDERGARTEN



FEATURE ENTRY PATH

STUCTURES, SIGNAGE & WAYFINDING



ENTRY SINAGE



ENTRY SINAGE



WAYFINDING



EDUCATIONAL SIGNAGE



EDUCATIONAL SIGNAGE

