

Green Wedge Management Plan – Project Overview

What is the Green Wedge?

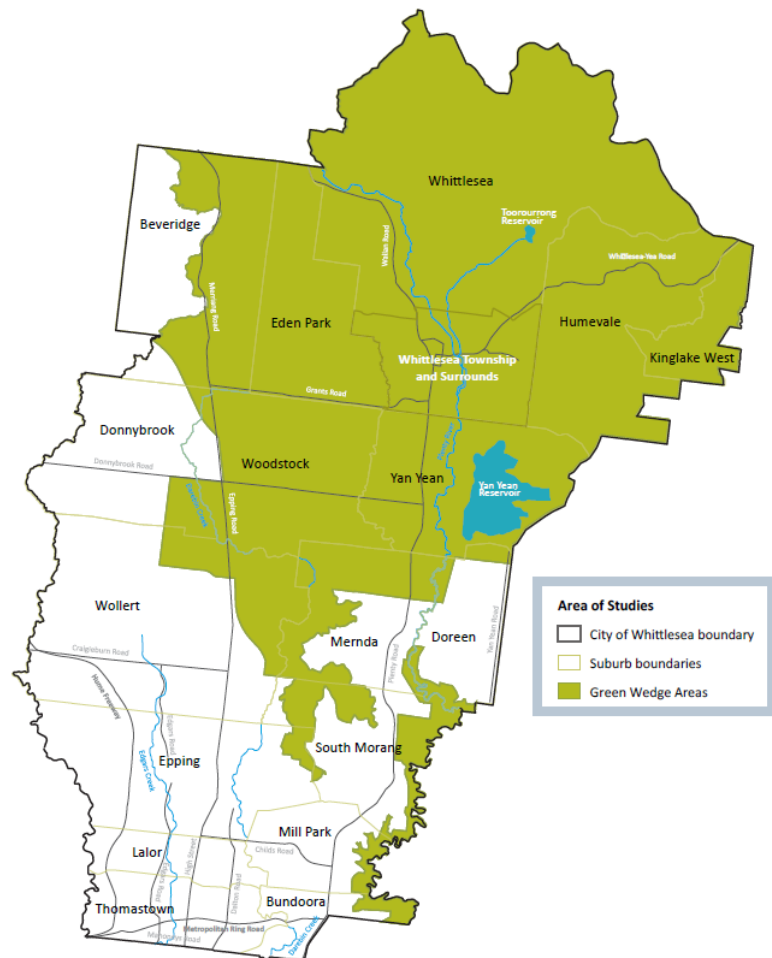
More than 60% of the City of Whittlesea is rural or non-urban land protected from urban development. This land is known as the Green Wedge and it covers an area that's more than three times the size of Phillip Island.

The Green Wedge is defined as the non-urban areas of metropolitan Melbourne that lie outside the Victorian Government's defined Urban Growth Boundary (UGB)

Almost half of the Green Wedge in the City of Whittlesea is public land home to much-loved national parks, forests and reservoirs.

It is also used for:

- agriculture
- rural living and small settlements
- recreation and tourism
- scenic landscapes
- Aboriginal and European heritage places
- resources such as sand, gravel and stone.



What is a Green Wedge Management Plan?

The Green Wedge areas of the City of Whittlesea are dynamic and constantly evolving. We have a Green Wedge Management Plan (GWMP) which sets the vision and objectives for how Council manages this land.

The current plan is being renewed and we are asking our community for their input.

Stage 1 Community Engagement took place between May and July 2021, and centred on the 'GWMP Discussion Paper'. Over 100 participants got involved and provided feedback, which has informed development of the new Draft GWMP. Stage 2 Community Engagement on the Draft GWMP will take place mid-year.

Get involved

In mid-2022, you can help shape the future of the Green Wedge by participating in the Stage 2 Community Engagement. Stage 2 will be marked by the release of the Draft Green Wedge Management Plan 2022-2032 for public comment.

There will be a number of events or opportunities to have your say.

If you are interested in being updated on opportunities to be involved, please contact us via email at strategic.planning@whittlesea.vic.gov.au or call us on 9217 2145.

We are committed to ensuring we are inclusive in our consultation so if you have a particular need to enable you to participate fully, please let us know.

Note: The plan will not involve any changes to the Urban Growth Boundary as this is set by the Victorian Government. Individual planning proposals within the Green Wedge are also outside of the scope of the plan.