

A group of children are running on a grassy field, playing soccer. In the foreground, a green and red soccer ball is on the grass. A boy in a white t-shirt and patterned shorts is running towards the ball. To his left, a boy in a grey t-shirt and blue shorts is also running. In the background, several other children are visible, some running and some standing. The field is green and grassy, and there are trees in the background under a clear blue sky.

5

Draft Master Plan

5.1 Overview

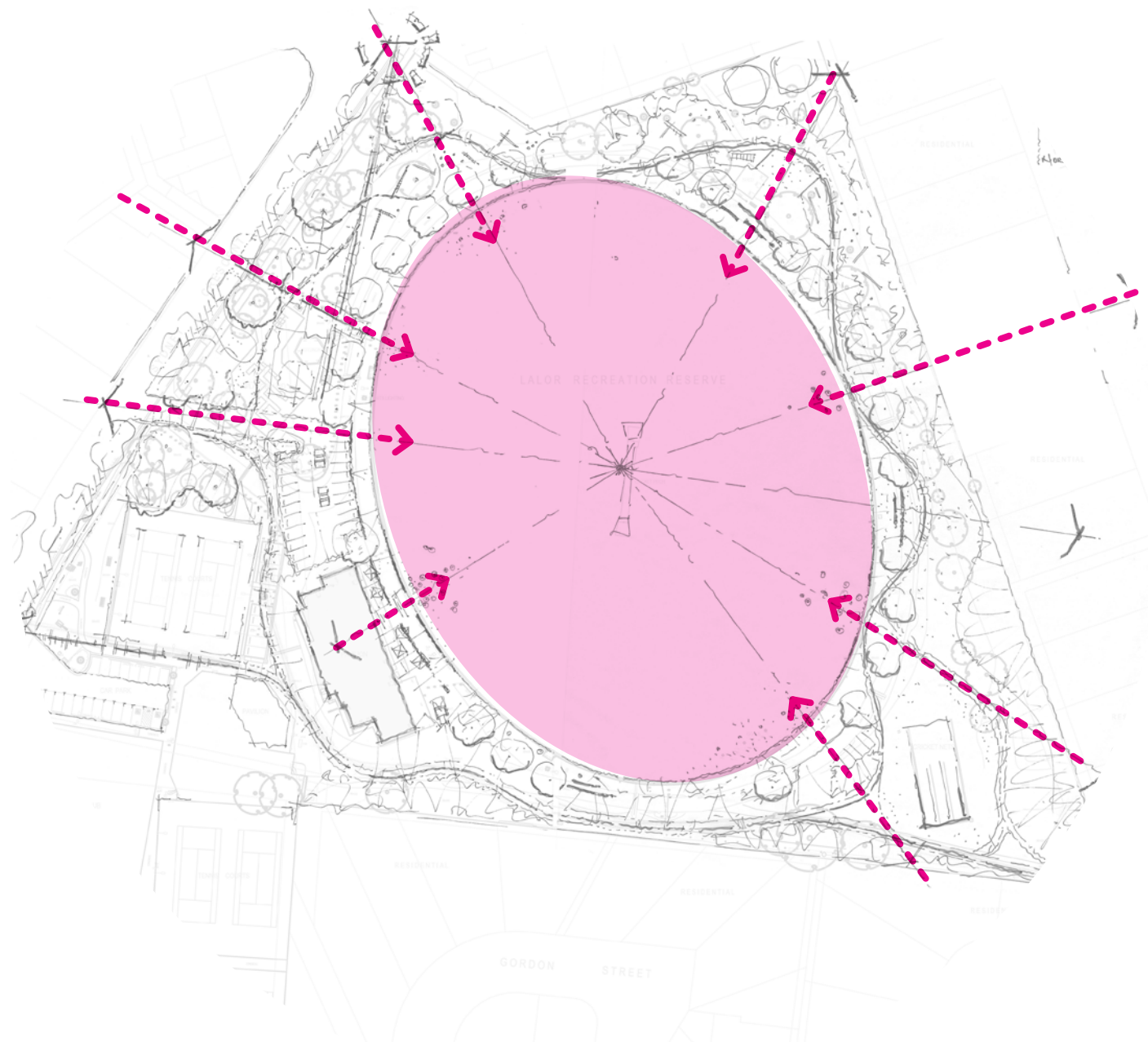
5.1.1 Purpose

Chapter 5 outlines the initial 100% urban and landscape detailed design and demonstrates appreciation and application of the Urban Design Vision, urban design principles and key performance indicators.

Disclaimer: XXX

5.1.2 Concept

‘The Village Heart’ uses the oval as the primary organising element. It retains the pavilion in its existing location and prioritises removing barriers between the existing surrounding public realm and the centre of the park, driving passive surveillance deep into the site and inviting users into and around the field through the improvement of the amenity to its surround.



Legend

- Primary path sealed (3m)
- Pathway with lighting
- Secondary path sealed (1.8m)
- Field access (breaks in fence/gates)
- Park front door
- Sydney Cres. upgrade
- Landscape (open lawn, native grassland and planting)
- Activity nodes (gym equip/play)
- Play spaces (inc. shelter, BBQ, etc.)
- Formal planting (groundcover & trees)
- Seating/informal grandstand zone
- Woodland planting (tree only)
- Buildings (child care/pavilion)
- Stormwater treatment

...

5.2 Functional Diagram

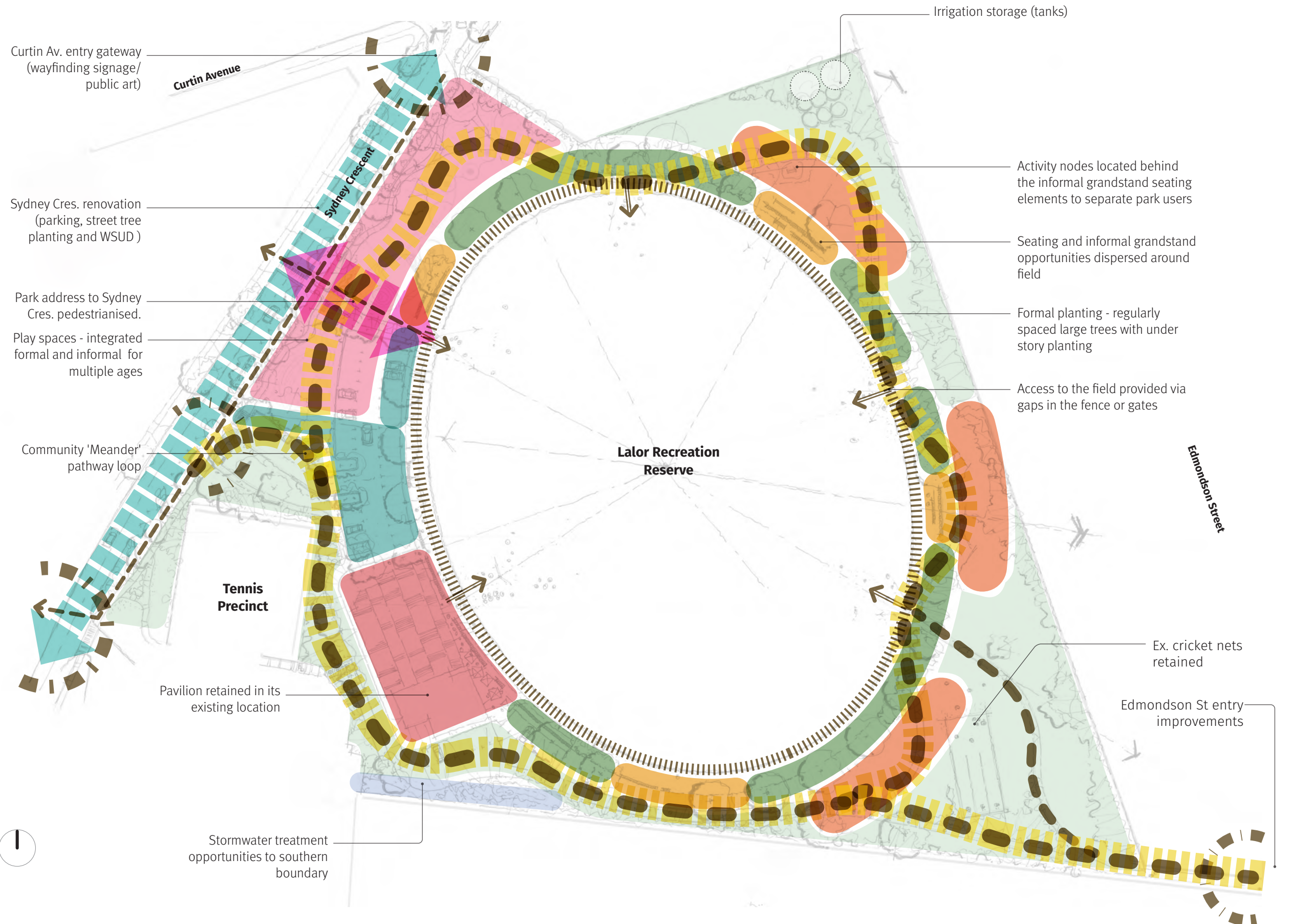
5.2.1 Key Areas

Key Area 1, Sporting infrastructure;

Key Area 2, Carparking;

Key Area 3, Lesiure and play;

Key Area 4, Connectivity



5.3 Masterplan

Legend

- 1A

Oval
- 1B

Running track
- 1C

Fence with openings
- 1D

Opening in fence
- 1E

Ornamental & formal planting
- 1F

Bleachers [insitu concrete with mounding]
- 2A

Pavilion upgrade - Potential for future infrastructure upgrades and pavilion expansion to the south
- 2B

Pavilion forecourt upgrade
- 2C

Events space, maintenance court & overflow parking
- 3A

Playground/ ball sports (integrated)
- 3B

Nature play
- 3C

Sensory/ Indigenous garden
- 4A

Exercise equipment
- 4B

Skating equipment
- 5A

Water Sensitive Urban Design (WSUD) Intervention
- 5B

Relocated irrigation header tanks
- 6A

Main entrance
- 6B

Secondary entrance
- 6C

Parking (80 parking bays, including Sydney Crescent and temporary overflow parking)
- 6D

Public health facilities (i.e., bins, toilets, water station)
- 6E

Revegetation planting*
- 6F

Cultural experience / feature
- 6G

Public amenity lighting*
- 6H

Sydney Crescent parking and parke edge upgrade

*CPTED is addressed passively through better visual and physical connections to Sydney Crescent and greater diversity of amenity and use.

Additional lighting requirements to primary paths are to be investigated as a part of future stages.

NOTE: Recently upgraded lighting to the tennis center has improved the perception of safety to the rear of the pavilion.

5.3 Masterplan



A photograph of four children in a forest setting. A girl with long blonde hair sits on the left, wearing a white top and brown pants. A girl with curly dark hair stands behind her, wearing a striped shirt and denim overalls. A boy with curly brown hair is in the center, kneeling and looking through a magnifying glass at the ground. Another boy with short dark hair is on the right, kneeling and holding a long stick. They are surrounded by pine needles and a small green plant. The background shows a large tree trunk and a sunlit forest.

6

Draft Playground Concept

6.1 Benchmarking

Ballam Park, Frankston VIC



Seabrook Reserve, Broadmeadows VIC



Pityarilla / Pelzer Park, Adelaide SA



Royal Park Nature Play, Parkville VIC



6.2 Play Experience

Solitary and Parallel Play

Independent play or playing alongside others without active interaction.



WAX Design - Glenelg Foreshore Playspace

Cooperative Play

Group play or play that involves direct cooperation with others.



WAX Design - Glenelg Foreshore Playspace

Functional Play

Repetition of actions and exploring the mechanisms of things.



ASPECT Studios - Harts Mill Playspace

Sensory Play

Play that develops the sense; touch, taste, smell, sound and visual.



WAX Design - Suneden Special School



Swanbury Penglase - Pedare College Mega Sandpit



WAX Design - Adelaide Zoo Nature Playspace



6.2 Play Experience

Constructive Play

Play with objects to construct from their own imagination.



Peter Semple LA - Mukathi Nature Playspace

Imaginative and Sociodramatic Play

Make believe play and imaginative play with others



Peter Semple LA - Mukathi Nature Playspace

Symbolic Play

Play that uses objects symbolically in place of other objects.



Educational Play

Play that involves literacy, games with rules, block and construction, music, puzzles and manipulation, phonics, fine motor skills and/or science.



Cairns Regional Council - Centenary Lakes Nature Playspace



ASPECT Studios - Felixstow Reserve Playspace



6.3 Overall Concept Design



① Concept Plan

1:500 @ A3

áurecon

This document is a draft only for review.

Note: Tree Protection Zones shown is an estimation only. TPZ for existing trees to be retained and protected to be obtained during design development of any further designs.

6.4 Playspace Concept Design



Concept Plan

1:250 @ A3

airecon

This document is a draft only for review.

Note: Tree Protection Zones shown is an estimation only. TPZ for existing trees to be retained and protected to be obtained during design development of any further designs.

6.5 Play Elements

Formal Play

Structured play and/or off the shelf elements.



01 Carousel (inclusive)



04 In-ground trampoline (inclusive)



07 Bespoke story telling signage (inclusive)



10 POPP table



02 Talking tubes (inclusive)



05 Drums (inclusive and sensory)



08 Fitness equipment (inclusive and aged friendly options)



11 Bespoke play tower with slide



03 Hammock swing (inclusive)



06 Bespoke playboards (inclusive)



09 5 a side basketball court

6.5 Play Elements

Informal Play

Nature play elements.



Teepee



Log steppers



Sensory garden with quiet space (inclusive)



Bespoke play mound with climbing ropes



Balancing ropes / stilts



Stone steppers



Surface treatment games (inclusive)



Bespoke split play mound with rope bridge



Balancing logs



Bespoke sight sensory element (inclusive)



Bespoke pole Maze



Nature play making/creating space